



## Cat 8 40G Shielded Premium Solid Conductor 23AWG 2000MHZ S/FTP PVC Custom Ethernet Patch Cable

### BUILD SPECIFICATIONS

# MADE IN THE USA

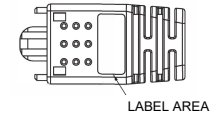
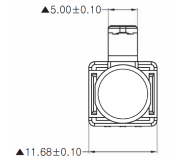
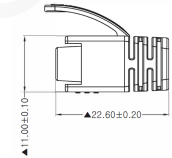
REV	ECR	DESCRIPTION	BY	DATE	CHECKED
A	-	INITIAL RELEASE	T.D.	05/17/2023	T.D.

NOTES: UNLESS OTHERWISE SPECIFIED

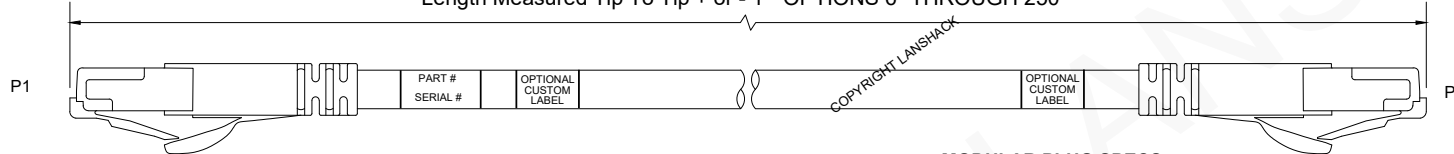
- |  |   |
|--|---|
| <ol style="list-style-type: none"> <li>1. MATERIALS AND COMPONENTS ARE RoHS/REACH COMPLIANT.</li> <li>2. CONNECTORS MEET THE REQUIREMENTS OF ANSI/TIA 568-C.2.</li> <li>3. CABLE ASSEMBLIES ARE CUSTOM MADE IN THE USA AND MANUFACTURED TO QUICKTREX STANDARDS.</li> <li>4. WIRING CONFIGURATION: 568B STRAIGHT (STANDARD), 568A ALTERNATE, OR 568B CROSS-OVER.</li> <li>5. TESTING: FLUKE TESTED &amp; CERTIFIED INCLUDING: CONTINUITY, SHORTS, WIRE MAPPING, NEXT (NEAR END CROSSTALK), AND RETURN LOSS. COMPONENT CERTIFIED TO 65FT, OVER 65FT CHANNEL CERTIFIED</li> </ol> | <ol style="list-style-type: none"> <li>6. EACH CABLE WILL INCLUDE LABEL WITH QUICKTREX PART NUMBER AND INDIVIDUAL SERIAL NUMBER. OPTIONAL LABEL IS OFFERED ON ONE END OR BOTH</li> <li>7. EACH CABLE INCLUDES SLIM SNAGGLES BOOT</li> <li>8. COLOR OPTIONS: BLUE</li> <li>9. ISO9001 CERTIFIED MANUFACTURING</li> </ol> |
|--|---|

#### STRAIN RELIEF BOOTS

- RJ45 CLEAR SLIM
- MATERIAL: PC, UL94V-2

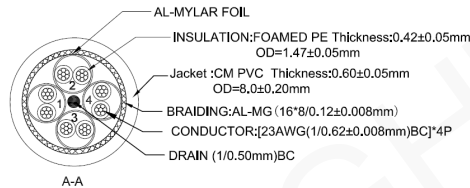


Length Measured Tip To Tip + or - 1" OPTIONS 6" THROUGH 250'



#### CABLE SPECS:

1. Physical Characteristic
  - a. Temperature Rating: 75°C
  - b. Voltage rating: 300V AC
  - c. elongation at conductors: :2,10%
  - d. Elongation at insulation: :2,300%
  - e. Tensile strength of insulation: :2,16.SMPa
  - f. Elongation at jacket: :2,100%
  - g. Electrical Tensile strength
    - Characteristics of jacket: :2,10.3MPa
2. Conductor DC resistance: 73.20/KM @ 20°C
  - a. DC Resistance Unbalance: S5%
  - b. Insulation resistance: :2,500MO/100m
  - c. Dielectric Test: 500V DC/1min; No Breakdown

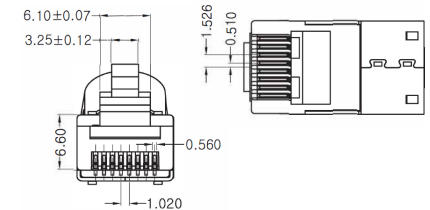


orange 1	green 2
white/orange	white/orange
blue 3	brown 4
white/blue	white/brown

#### MODULAR PLUG SPECS:

- PLUG BODY: CLEAR POLYCARBONATE, UL 94-2
- LOAD BAR: CLEAR POLYCARBONATE, UL 94-2
- WIRE ALIGNER: CLEAR POLYCARBONATE, UL 94-2
- GROMMET: BLACK POLYCARBONATE, UL 94-VO
- CONTACTS: 3 PRONGS, PHOSPOR COPPER, 50u" Gold PLATING
- SHELL: BRASS, 80u" NICKEL PLATING
- Operation Temperature: -40° C ~ +85° C
- Electrical Characteristics:
  - o >Rated Current: 125V AC, 1.5A@25°C
  - o Contact Resistance: 20mΩ Max.
  - o Insulation Resistance: 500MO Min, 1 OOV DC/min.
  - o Voltage Proof: 1 OOOV AC/1 minute no breakdown.
- Mechanical Characteristics:
  - o Insertion Force & Withdrawal Force: 30N Max.
  - o Durability: 750 cycles Min.
- Environmental compliance:
  - o the products are compliant with the RoHS, and REACH etc.
- CONDUCTOR: STRANDED & SOLID WIRE, 22AWG, 24AWG.

#### MODULAR PLUG DRAWINGS



### PINOUT OPTIONS

WIRING CONFIGURATION 568B STRAIGHT STANDARD			WIRING CONFIGURATION 568A			WIRING CONFIGURATION 568B CROSS-OVER			
PIN	COLOR CODE	PIN	PIN	COLOR CODE	PIN	PIN	COLOR CODE	PIN	
1	WHITE&ORANGE	1	1	WHITE&GREEN	1	1	WHITE/ORANGE	WHITE/GREEN	1
2	ORANGE	2	2	GREEN	2	2	ORANGE	GREEN	2
3	WHITE&GREEN	3	3	WHITE&ORANGE	3	3	WHITE/GREEN	WHITE/ORANGE	3
4	BLUE	4	4	BLUE	4	4	BLUE	WHITE/BROWN	4
5	WHITE&BLUE	5	5	WHITE&BLUE	5	5	WHITE/BLUE	BROWN	5
6	GREEN	6	6	ORANGE	6	6	GREEN	ORANGE	6
7	WHITE&BROWN	7	7	WHITE&BROWN	7	7	WHITE/BROWN	BLUE	7
8	BROWN	8	8	BROWN	8	8	BROWN	WHITE/BLUE	8

DESCRIPTION: RJ45 SHIELDED/ RJ45 SHIELDED CAT68 PATCH CORD

DRAWN BY:	T. D.	05/17/2023	Purchase at <b>LANshack</b> Sales@LANshack.com   888-568-1230		
APVD BY:	J. P.	05/17/2023	TITLE: Cat 8 40G Shielded Premium Solid Conductor 23AWG 2000MHZ S/FTP PVC Custom Ethernet Patch Cable by QuickTrex®		
DIMENSIONS: METRIC [IMPERIAL]			TITLE: Cat 8 40G Shielded Premium Solid Conductor 23AWG 2000MHZ S/FTP PVC Custom Ethernet Patch Cable by QuickTrex®		
PROPRIETARY AND CONFIDENTIAL <small>THIS DOCUMENT CONTAINS PROPRIETARY INFORMATION OF LANSHACK. NOT TO BE USED, COPIED, OR DISCLOSED WITHOUT WRITTEN PERMISSION. ALL RIGHTS RESERVED.</small>			SIZE <b>A</b>	PART NUMBER <b>QT-C8S-40G-23A-XX</b>	REV <b>A</b>
SCALE: NOT TO SCALE				SHEET 1 OF 1	